

# SMOKE PRODUCTS

## Standard Series

### Product Specifications



Smoke, your tool for a cleaner environment and increased security

Our standard smoke series is commonly used in ventilation tests, air flow studies, leakage tests of chimneys, film production, hobby and much more. This series have the salt ammonium chloride as main smoke generator so it is not suitable for tests in sensitive environments such as server rooms, clean rooms and so on.



#### **MINIAX** SMOKE CARTRIDGE No: 40001

**Content:** 10 cartridges/box  
**Smoke Colour:** white  
**weight approx:** 3g/cartridge  
**Size approx:** 32 x Ø 14 mm  
**Smoke Volume approx:** 2,5 m<sup>3</sup>  
**Burning time approx:** 45 sec.



#### **MINIAX KS** SMOKE CARTRIDGE No: 40002

**Content:** 10 cartridges/box  
**Smoke Colour:** white  
**weight approx:** 9g/cartridge  
**Size approx:** 32 x Ø 18 mm  
**Smoke Volume approx:** 8,5 m<sup>3</sup>  
**Burning time approx:** 65 sec.



#### **VENTILAX** SMOKE CARTRIDGE No: 40003

**Content:** 5 cartridges/box  
**Smoke Colour:** white  
**weight approx:** 18g/cartridge  
**Size approx:** 18 x Ø 63 mm  
**Smoke Volume approx:** 17 m<sup>3</sup>  
**Burning time approx:** 3-4 min.



#### **BRANDAX VS** SMOKE CARTRIDGE No: 40004

**Content:** 5 cartridges/tub  
**Smoke Colour:** white  
**weight approx:** 60g/cartridge  
**Size approx:** 32 x Ø 63 mm  
**Smoke Volume approx:** 55m<sup>3</sup>  
**Burning time approx:** 3-4 min.



#### **BRANDAX KS** SMOKE CARTRIDGE No: 40005

**Content:** 1 cartridge  
**Smoke Colour:** white  
**weight approx:** 430g/cartridge  
**Size approx:** 110 x Ø 90 mm  
**Smoke Volume approx:** 400m<sup>3</sup>  
**Burning time approx:** 6-8 min.

**For all above products:**

**Example of use / tests:**

Smoke Alarms, Air Filters, Fume Hoods, Air Balancing, Fans, Photography, Special Effects and much more.

**Note:**

Not for use in sensitive environments, contain larger amount of chlorides, for tests in sensitive environments please refer to our Clean Smoke series.

# SMOKE CARTRIDGES

## Clean Smoke Series

### Product Specifications



Smoke, your tool for a cleaner environment and increased security

The name CLEAN SMOKE is a bit of a contradiction but we have actually created a practical test smoke so clean from chlorides it is suitable to perform air flow tests in server rooms and other sensitive areas.

This product is ideal for the air balancing industry, energy conservation and weatherization, for HVAC professionals, testing of smoke and fire prevention systems, special effects or anywhere you need just the right amount of smoke in just the right place without the effects of chlorides.



**PURE-AX 3**  
SMOKE CARTRIDGE  
No: 40031  
Content: 10 cartridges/box  
Smoke Colour: white  
weight approx: 3g/cartridge  
Size approx: 32 x Ø 14 mm  
Smoke Volume approx: 2,5 m<sup>3</sup>  
Burning time approx: 40 sec.



**PURE-AX 9**  
SMOKE CARTRIDGE  
No: 40032  
Content: 10 cartridges/box  
Smoke Colour: white  
weight approx: 9g/cartridge  
Size approx: 32 x Ø 18 mm  
Smoke Volume approx: 8,5 m<sup>3</sup>  
Burning time approx: 65 sec.



**PURE-AX 18**  
SMOKE CARTRIDGE  
No: 40033  
Content: 5 cartridges/box  
Smoke Colour: white  
weight approx: 18g/cartridge  
Size approx: 18 x Ø 63 mm  
Smoke Volume approx: 17 m<sup>3</sup>  
Burning time approx: 240 sec.



**DATAx**  
SMOKE CARTRIDGE  
No: 40034  
Content: 5 cartridges/tub  
Smoke Colour: white  
weight approx: 60g/cartridge  
Size approx: 32 x Ø 63 mm  
Smoke Volume approx: 55m<sup>3</sup>  
Burning time approx: 240 sec.

**For all above products:**

**Example of use / tests:**

Smoke Alarms, Air Filters, Fume Hoods, Air Balancing, Fans, Photography, Special Effects and much more.

**Note:**

For use in sensitive environments, contain very low amount of chlorides.

# SMOKE PRODUCTS

## Perfumed Series

### Product Specifications



Smoke, your tool for a cleaner environment and increased security

The perfumed series is well used to trace leakages in very long ventilation systems or other test applications where you can use your nose instead of your eyes to track leakages.

At installations of very long piping of any kind you need very large amounts of smoke to make leakage points visible for the eye, but if you use our perfumed smoke product then you will be able to easily find the area where your leakage is located.

When used by military forces in training it is ideal for testing the fit of gasmasks and how the recruits handle a simulated gas attack.



#### PERFUME-AX 3 SMOKE CARTRIDGE No:40021

**Content:** 10 cartridges/box  
**Smoke Colour:** white/perfumed  
**weight approx:** 3g/cartridge  
**Size approx:** 32 x Ø 14 mm  
**Smoke Volume approx:** 2,5 m<sup>3</sup>  
**Burning time approx:** 45 sec.



#### PERFUME-AX 9 SMOKE CARTRIDGE No:40022

**Content:** 10 cartridges/box  
**Smoke Colour:** white/perfumed  
**weight approx:** 9g/cartridge  
**Size approx:** 32 x Ø 18 mm  
**Smoke Volume approx:** 8,5 m<sup>3</sup>  
**Burning time approx:** 65 sec.



#### PERFUME-AX 18 SMOKE CARTRIDGE No:40023

**Content:** 5 cartridges/box  
**Smoke Colour:** white/perfumed  
**weight approx:** 18g/cartridge  
**Size approx:** 18 x Ø 63 mm  
**Smoke Volume approx:** 17 m<sup>3</sup>



#### PERFUME-AX 60 SMOKE CARTRIDGE No:40024

**Content:** 5 cartridges/tub  
**Smoke Colour:** white/perfumed  
**weight approx:** 60g/cartridge  
**Size approx:** 32 x Ø 63 mm  
**Smoke Volume approx:** 55m<sup>3</sup>

**For all above products:**

**Example of use / tests:**

Smoke Alarms, Air Filters, Fume Hoods, Air Balancing, Fans, Photography, Special Effects and much more.

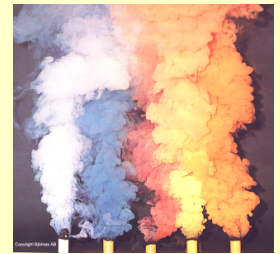
**Note:**

Not for use in sensitive environments, contain larger amount of chlorides, for tests in sensitive environments please refer to our Clean Smoke series.

# SMOKE CARTRIDGES

## Coloured 18 gram Series

### Product Specifications



Smoke, your tool for a cleaner environment and increased security

Colored smoke for fire and rescue services is a high-tech product which fulfils the demands necessary for ensuring personal safety and creating a realistic exercise. Our training smoke has properties like smoke from a real fire: it expands from ceiling to floor, has powerful turbulence and produces a robust effect.

Our products are used even in electrical model planes for an effect that was earlier only possible with petrol-burning motors. You can even create coloured ribbons of smoke in the colour combinations of your choice.



#### COLOUR SMOKE AX-18

**SMOKE CARTRIDGE**  
**No: 40050**  
**Content:** 5 Smoke Cartridges  
**Smoke Colour:** Blue  
**Cartridge weight:** 18g/cartridge  
**Size:** 62 x Ø 18 mm  
**Smoke Volume:** 17 m<sup>3</sup>  
**Burning time:** 180-240 sec.



#### COLOUR SMOKE AX-18

**SMOKE CARTRIDGE**  
**No: 40051**  
**Content:** 5 Smoke Cartridges  
**Smoke Colour:** Green  
**Cartridge weight:** 18g/cartridge  
**Size:** 62 x Ø 18 mm  
**Smoke Volume:** 17 m<sup>3</sup>  
**Burning time:** 180-240 sec.



#### COLOUR SMOKE AX-18

**SMOKE CARTRIDGE**  
**No: 40052**  
**Content:** 5 Smoke Cartridges  
**Smoke Colour:** Yellow  
**Cartridge weight:** 18g/cartridge  
**Size:** 62 x Ø 18 mm  
**Smoke Volume:** 17 m<sup>3</sup>  
**Burning time:** 180-240 sec.



#### COLOUR SMOKE AX-18

**SMOKE CARTRIDGE**  
**No: 40053**  
**Content:** 5 Smoke Cartridges  
**Smoke Colour:** Orange  
**Cartridge weight:** 18g/cartridge  
**Size:** 62 x Ø 18 mm  
**Smoke Volume:** 17 m<sup>3</sup>  
**Burning time:** 180-240 sec.



#### COLOUR SMOKE AX-18

**SMOKE CARTRIDGE**  
**No: 40054**  
**Content:** 5 Smoke Cartridges  
**Smoke Colour:** Red  
**Cartridge weight:** 18g/cartridge  
**Size:** 62 x Ø 18 mm  
**Smoke Volume:** 17 m<sup>3</sup>  
**Burning time:** 180-240 sec.



#### COLOUR SMOKE AX-18

**SMOKE CARTRIDGE**  
**No: 40055**  
**Content:** 5 Smoke Cartridges  
**Smoke Colour:** Dark Grey  
**Cartridge weight:** 18g/cartridge  
**Size:** 62 x Ø 18 mm  
**Smoke Volume:** 17 m<sup>3</sup>  
**Burning time:** 180-240 sec.



**For all above products:**

**Example of use / tests:**

Smoke Alarms, Air Filters, Fume Hoods, Air Balancing, Fans, Photography, Special Effects and much more.

**Note:**

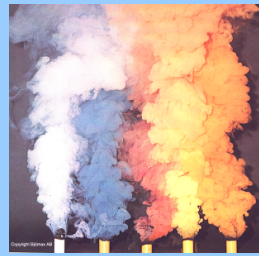
Not for use in sensitive environments, contain larger amount of chlorides and coloured smoke may stain surfaces.

For tests in sensitive environments please refer to our Clean Smoke series.

# SMOKE CARTRIDGES

## Coloured 60 gram Series

### Product Specifications



Smoke, your tool for a cleaner environment and increased security

Colored smoke for fire and rescue services is a high-tech product which fulfils the demands necessary for ensuring personal safety and creating a realistic exercise. Our training smoke has properties like smoke from a real fire: it expands from ceiling to floor, has powerful turbulence and produces a robust effect.

Our products are used even in electrical model planes for an effect that was earlier only possible with petrol-burning motors. You can even create coloured ribbons of smoke in the colour combinations of your choice.



**COLOUR SMOKE AX-60**  
**SMOKE CARTRIDGE**  
**No: 40060**  
**Content:** 5 Smoke Cartridges  
**Smoke Colour:** Blue  
**Cartridge weight:** 60g/cartridge  
**Size:** 62 x Ø 32 mm  
**Smoke Volume:** 55 m<sup>3</sup>  
**Burning time:** 180-240 sec.



**COLOUR SMOKE AX-60**  
**SMOKE CARTRIDGE**  
**No: 40061**  
**Content:** 5 Smoke Cartridges  
**Smoke Colour:** Green  
**Cartridge weight:** 60g/cartridge  
**Size:** 62 x Ø 32 mm  
**Smoke Volume:** 55 m<sup>3</sup>  
**Burning time:** 180-240 sec.



**COLOUR SMOKE AX-60**  
**SMOKE CARTRIDGE**  
**No: 40062**  
**Content:** 5 Smoke Cartridges  
**Smoke Colour:** Yellow  
**Cartridge weight:** 60g/cartridge  
**Size:** 62 x Ø 32 mm  
**Smoke Volume:** 55 m<sup>3</sup>  
**Burning time:** 180-240 sec.



**COLOUR SMOKE AX-60**  
**SMOKE CARTRIDGE**  
**No: 40063**  
**Content:** 5 Smoke Cartridges  
**Smoke Colour:** Orange  
**Cartridge weight:** 60g/cartridge  
**Size:** 62 x Ø 32 mm  
**Smoke Volume:** 55 m<sup>3</sup>  
**Burning time:** 180-240 sec.



**COLOUR SMOKE AX-60**  
**SMOKE CARTRIDGE**  
**No: 40064**  
**Content:** 5 Smoke Cartridges  
**Smoke Colour:** Red  
**Cartridge weight:** 60g/cartridge  
**Size:** 62 x Ø 32 mm  
**Smoke Volume:** 55 m<sup>3</sup>  
**Burning time:** 180-240 sec.



**COLOUR SMOKE AX-60**  
**SMOKE CARTRIDGE**  
**No: 40065**  
**Content:** 5 Smoke Cartridges  
**Smoke Colour:** Dark Grey  
**Cartridge weight:** 60g/cartridge  
**Size:** 62 x Ø 32 mm  
**Smoke Volume:** 55 m<sup>3</sup>  
**Burning time:** 180-240 sec.



For all above products:

**Example of use / tests:**

Smoke Alarms, Air Filters, Fume Hoods, Air Balancing, Fans, Photography, Special Effects and much more.

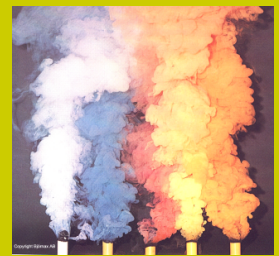
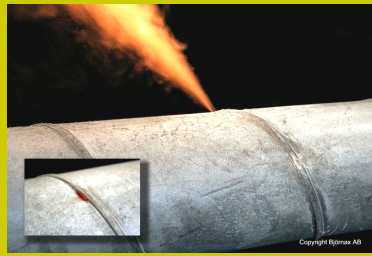
**Note:**

Not for use in sensitive environments, contain larger amount of chlorides and coloured smoke may stain surfaces.  
 For tests in sensitive environments please refer to our Clean Smoke series.

# SMOKE CARTRIDGES

## Coloured various sizes

### Product Specifications



Smoke, your tool for a cleaner environment and increased security

Our smaller orange coloured products 3 and 9 gram in size is mostly used for checking chimney flows and heater installations.

Our larger orange smoke cartridge BRANDAX KSO is mostly used within fire training and leakage tests on large tanks, pipes and the like.



#### COLOUR SMOKE AX-3 SMOKE CARTRIDGE No: 40041

**Content:** 10 cartridges/box  
**Smoke Colour:** Orange  
**Cartridge weight:** 3g/cartridge  
**Size:** 32 x Ø 14 mm  
**Smoke Volume approx:** 2,5 m<sup>3</sup>  
**Burning time approx:** 45 sec.



#### COLOUR SMOKE AX-9 SMOKE CARTRIDGE No: 40042

**Content:** 10 Smoke Cartridges  
**Smoke Colour:** Orange  
**Cartridge weight:** 9g/cartridge  
**Size:** 32 x Ø 18 mm  
**Smoke Volume:** 8,5 m<sup>3</sup>  
**Burning time:** 65 sek



#### BRANDAX KSO SMOKE CARTRIDGE No: 40045

**Content/Carton:** 6 Smoke Cartridges  
**Smoke Colour:** Orange  
**Cartridge weight:** 430g/cartridge  
**Size:** 110 x Ø 90 mm  
**Smoke Volume:** 400 m<sup>3</sup>  
**Burning time:** 300-360 sec.

**For all above products:**

**Example of use / tests:**

Smoke Alarms, Air Filters, Fume Hoods, Air Balancing, Fans, Photography, Special Effects and much more.

**Note:**

Not for use in sensitive environments, contain larger amount of chlorides and coloured smoke may stain surfaces.  
For tests in sensitive environments please refer to our Clean Smoke series.

# SMOKE-PEN

## Smoke-Pen & Wicks

### Product Specifications



Smoke, your tool for a cleaner environment and increased security

Our product Smoke-Pen have become one of the most versatile test tools ever, yet simple in its use and construction but with so many possibilities.

Ideal for function test of smoke detectors even aspirating systems, to pin point leakages and drafts, function test of fume hoods and ventilation outlets and flow pattern test of ventilation inlets, the list can be made long but if you have any questions regarding your test application just contact us so will we help you as much as we can.



#### SMOKE-PEN

No: 80000

**Content:** 1Pen 6 Wicks  
**Smoke Colour:** white  
**Weight:** 34g/pen  
**Size:** 150 x Ø 13 mm  
**Burning time:** 30 min/wick.



#### SMOKE-PEN

No: 80002

**Content:** 1Pen 3 Wicks  
**Smoke Colour:** white  
**Weight:** 34g/pen  
**Size:** 150 x Ø 13 mm  
**Burning time:** 30 min/wick.



Copyright Björmax AB



#### REFILL

No: 80001

**Content:** 6 Smoke Wicks  
**Smoke Colour:** white  
**Weight:** 10g/Pack  
**Size:** 70 x Ø 6 mm  
**Burning time:** 30 min/wick.



#### REFILL

No: 80003

**Content:** 3 Smoke Wicks  
**Smoke Colour:** white  
**Weight:** 10g/Pack  
**Size:** 70 x Ø 6 mm  
**Burning time:** 30 min/wick.

For all above products:

#### Example of use / tests:

Smoke Alarms, Air Filters, Fume Hoods, Air Balancing, Fans, Photography, Special Effects and much more.

#### Note:

For use in sensitive environments, contain no chlorides.

# SMOKE-MATCH

## Product Specifications



Smoke, your tool for a cleaner environment and increased security

Ideal for function test of smoke detectors even aspirating systems, to pin point leakages and drafts, function test of fume hoods and ventilation outlets and flow pattern test of ventilation inlets, the list can be made long but if you have any questions regarding your test application just contact us so will we help you as much as we can.



### SPLINTAX SMOKE MATCH No: 40095

**Content:** 25 Matches/Tub  
**Smoke Colour:** white  
**weight approx:** 1g/match  
**Size approx:** 44 x Ø 5 mm  
**Smoke Volume approx:** 0,75 m<sup>3</sup>  
**Burning time approx:** 25 sec.



### SPLINTAX SMOKE MATCH No: 40096

**Content:** 100 Matches/Tub  
**Smoke Colour:** white  
**weight approx:** 1g/match  
**Size approx:** 44 x Ø 5 mm  
**Smoke Volume approx:** 0,75 m<sup>3</sup>  
**Burning time approx:** 25 sec.



### SPLINTAX SMOKE MATCH No: 40091

**Content:** 20 Matches/box, 48 boxes/carton  
**Smoke Colour:** white  
**weight approx:** 1g/match  
**Size approx:** 44 x Ø 5 mm  
**Smoke Volume approx:** 0,75 m<sup>3</sup>  
**Burning time approx:** 25 sec.



### SPLINTAX SMOKE MATCH No: 40092

**Content:** 20 Matches/box, 6 boxes/pack  
**Smoke Colour:** white  
**weight approx:** 1g/match  
**Size approx:** 44 x Ø 5 mm  
**Smoke Volume approx:** 0,75 m<sup>3</sup>  
**Burning time approx:** 25 sec.

**For all above products:**

**Example of use / tests:**

Smoke Alarms, Air Filters, Fume Hoods, Air Balancing, Fans, Photography, Special Effects and much more.

**Note:**

Not for use in sensitive environments, contain larger amount of chlorides, for tests in sensitive environments please refer to our Clean Smoke series.